

11
King Street
Delta

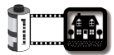
Last Revised: 2023-12-19
Page 2 of 4

Karen Croxall

Sales Representative

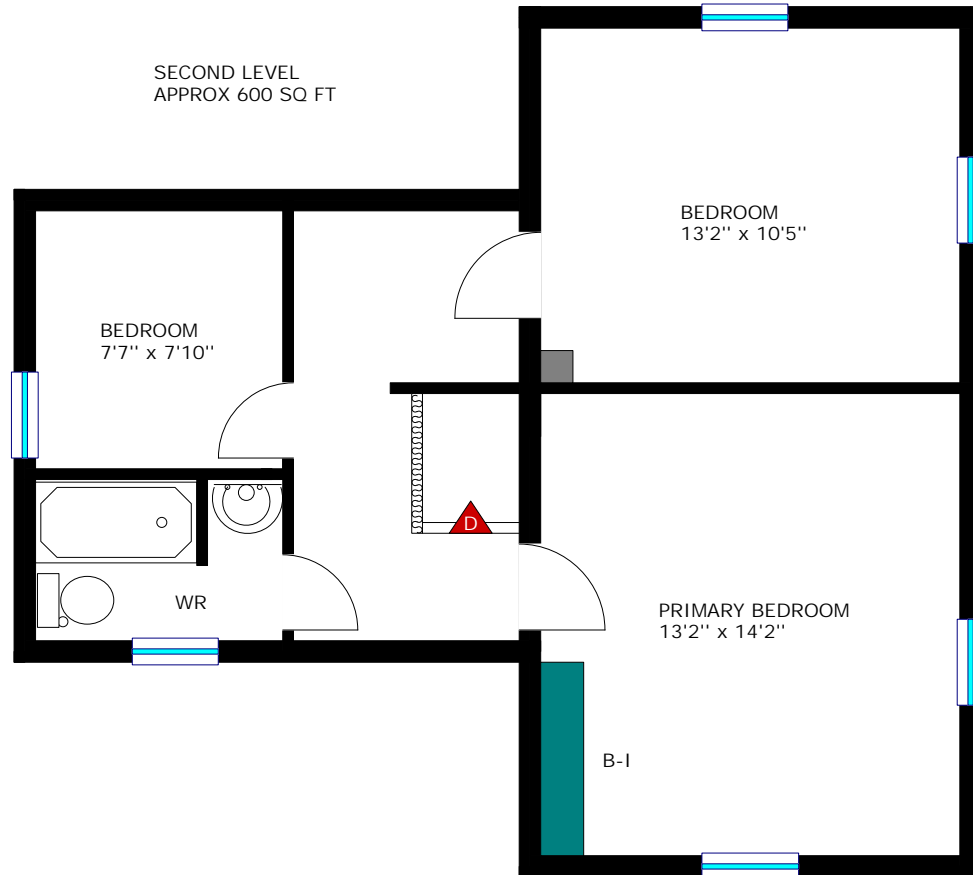


Floor plan measurements and square footage are approximate, and drawings are for illustrative purposes only. We make no guarantee or warranty as to the accuracy and completeness of the floor plan. Please be sure to conduct an independent investigation of the property to determine the suitability for your space requirements.



www.realtyservices.ca

SECOND LEVEL
APPROX 600 SQ FT



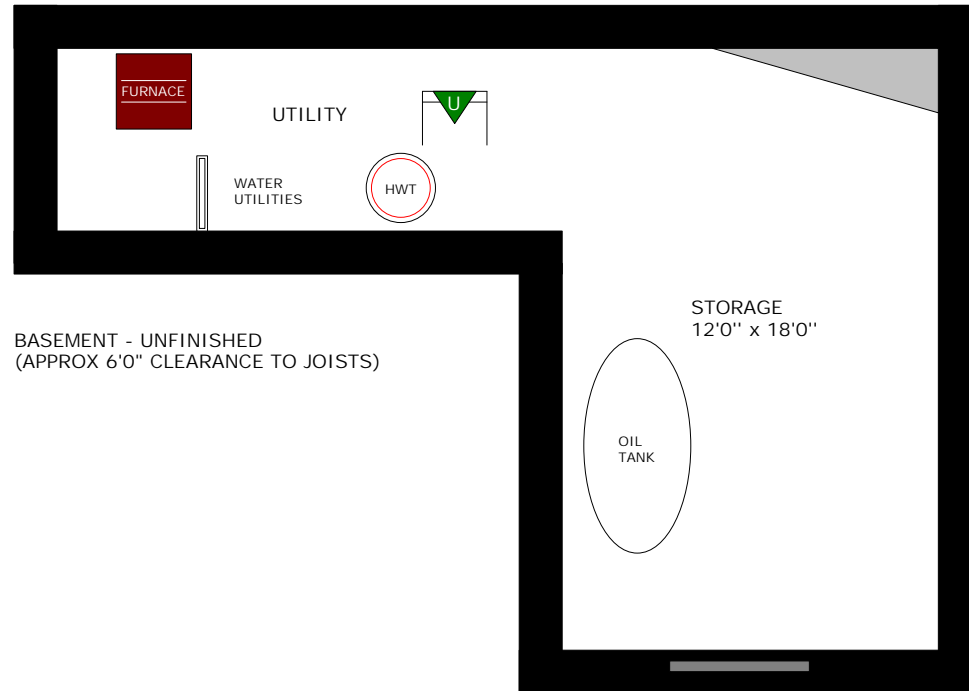
11
King Street
Delta

Last Revised: 2023-12-19
Page 3 of 4

Karen Croxall
Sales Representative



Floor plan measurements and square footage are approximate, and drawings are for illustrative purposes only. We make no guarantee or warranty as to the accuracy and completeness of the floor plan. Please be sure to conduct an independent investigation of the property to determine the suitability for your space requirements.



www.realtyservices.ca

11
King Street
Delta

Last Revised: 2023-12-19
Page 4 of 4

Karen Croxall

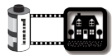
Sales Representative



Floor plan measurements and square footage are approximate, and drawings are for illustrative purposes only. We make no guarantee or warranty as to the accuracy and completeness of the floor plan. Please be sure to conduct an independent investigation of the property to determine the suitability for your space requirements.

Room Measurements

| LEVEL | ROOM / AREA | IMPERIAL | METRIC (Metres) |
|--------------|--------------------|-----------------|------------------------|
| MAIN | Living Room | 13'2" x 14'2" | 4.01 x 4.32 |
| | Eat-In Kitchen | 12'0" x 12'9" | 3.66 x 3.89 |
| | Family Room | 13'2" x 10'4" | 4.01 x 3.15 |
| | Laundry | 14'4" x 9'2" | 4.37 x 2.79 |
| SECOND | Primary Bedroom | 13'2" x 14'2" | 4.01 x 4.32 |
| | Bedroom | 13'2" x 10'5" | 4.01 x 3.18 |
| | Bedroom | 7'7" x 7'10" | 2.31 x 2.39 |
| | 4-Pc Bath | 7'7" x 4'8" | 2.31 x 1.42 |
| BASEMENT | Utility | 15'0" x 5'9" | 4.57 x 1.75 |
| | Storage | 12'0" x 18'0" | 3.66 x 5.49 |
| OTHER | Deck | 7'5" x 30'0" | 2.26 x 9.14 |
| | Garage | 19'0" x 19'2" | 5.79 x 5.84 |
| | Tool Shed | 15'4" x 7'2" | 4.67 x 2.18 |
| | + Lean-To | 12'9" x 5'7" | 3.89 x 1.70 |



www.realtyservices.ca